



**UConn and UConn Health  
Fiscal Year 2025 Second Quarter Financial Review**

# UConn: FY25 Q2 Actual vs Budget

	FY25 Q2 Actuals	FY25 Q2 Budget	Q2 Variance	FY25 Forecast	FY25 BOT Budget	Variance	Q2 % of Budget
State Appropriations	\$199.5	\$205.0	(\$5.5)	\$322.6	\$328.1	(\$5.5)	60.8%
Tuition	304.1	295.7	8.4	574.2	559.2	15.0	54.4%
Course/Mandatory Fees	88.2	83.9	4.3	173.9	167.8	6.2	52.6%
Grants & Contracts - Financial Aid	45.4	43.2	2.2	82.6	80.0	2.6	56.8%
Grants & Contracts - Other	131.8	115.0	16.8	236.3	211.2	25.0	62.4%
Auxiliary Revenue	138.8	127.5	11.3	257.0	242.2	14.8	57.3%
Other Revenues <sup>(1)</sup>	45.3	41.4	3.9	101.4	82.8	18.6	54.7%
<b>Total Revenues</b>	<b>\$953.0</b>	<b>\$911.7</b>	<b>\$41.3</b>	<b>\$1,747.9</b>	<b>\$1,671.3</b>	<b>\$76.6</b>	<b>57.0%</b>
Salary/Benefits	\$462.1	\$449.2	\$12.9	\$925.5	\$899.8	\$25.7	51.4%
Financial Aid - Tuition Funded	102.6	99.2	3.4	203.7	198.4	5.2	51.7%
Financial Aid - Other	64.0	60.0	4.0	116.9	108.2	8.7	59.1%
Capital Projects/Lease and Debt Payments	35.5	25.0	10.5	106.6	86.9	19.7	40.9%
Other Expenses <sup>(2)</sup>	185.0	182.4	2.6	393.8	390.2	3.6	47.4%
<b>Total Expense</b>	<b>\$849.2</b>	<b>\$815.8</b>	<b>\$33.4</b>	<b>\$1,746.5</b>	<b>\$1,683.6</b>	<b>\$63.0</b>	<b>50.4%</b>
Use of Fund Balance/FIP				0.0	12.3	(12.3)	
<b>Net Income/(Loss)</b>	<b>\$103.8</b>	<b>\$95.9</b>	<b>\$8.0</b>	<b>\$1.4</b>	<b>\$0.0</b>	<b>\$1.4</b>	

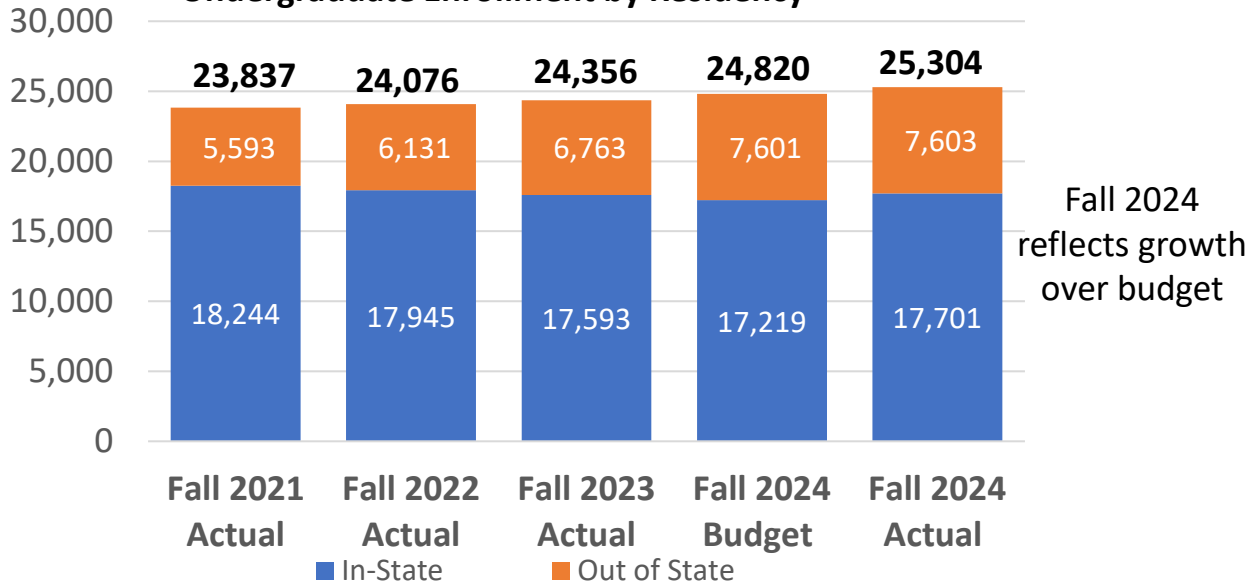
(1) Other Revenue includes Foundation, investments, gifts and self-supporting revenue

(2) Other Expense includes food service, supplies, facilities contracts, travel and other operating expenses

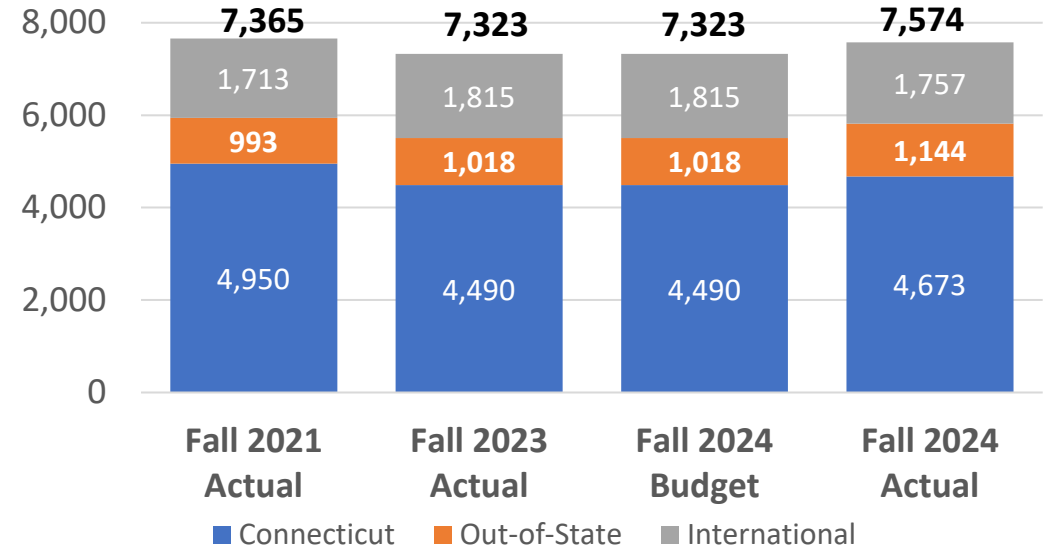


# UConn: FY25 Data points

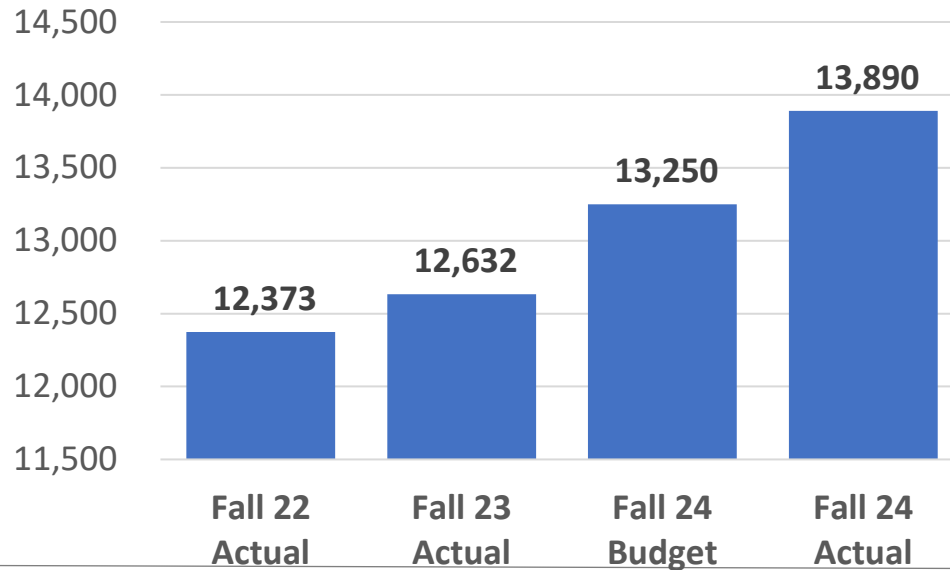
## Undergraduate Enrollment by Residency



## Graduate Enrollment by Residency



## Fall Housing Occupancy



On-campus housing in Fall 2024 is over 100% capacity and includes off-campus leases

Graduate enrollment is running favorably over budget, which is assumed to be flat enrollment. Growth includes professional programs, such as Social Work



# UConn Health: FY25 Q2 Actual vs Budget

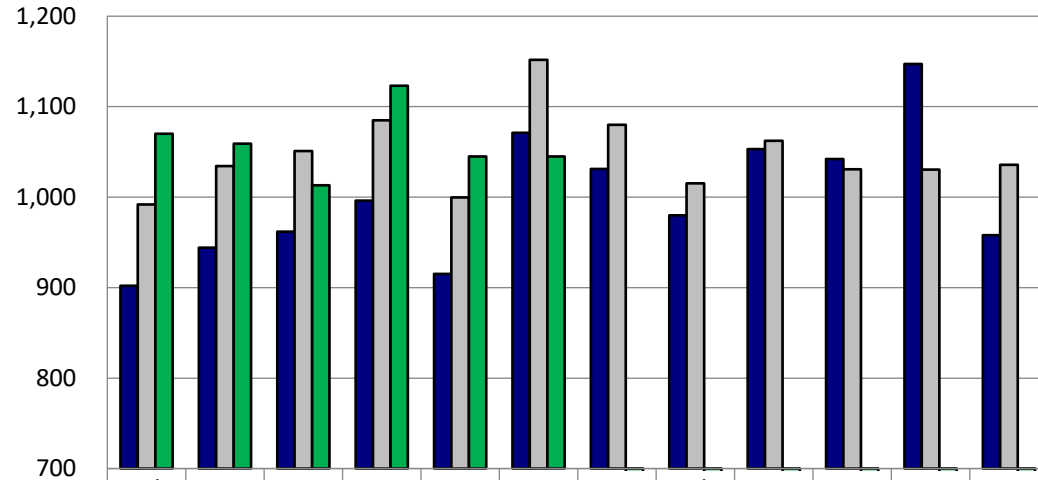
	FY25 Q2 Actuals	FY25 Q2 Budget	Q2 Variance	FY25 Q2 Forecast	FY25 Budget	Variance	Percent of Budget
State Appropriations	\$ 85.4	\$ 85.8	\$ (0.4)	\$ 194.2	\$ 198.7	\$ (4.5)	44.0%
Tuition and Fees	18.0	17.1	0.9	35.4	34.2	1.2	52.6%
Grants & Contracts	61.0	62.3	(1.4)	117.8	119.2	(1.4)	51.2%
Interns/Residents	46.2	46.2	0.0	92.3	92.2	0.0	50.1%
Net Patient Revenue	526.2	505.7	20.5	1,036.8	1,011.2	25.6	52.0%
Other Revenue (1)	117.6	104.7	12.9	218.3	206.5	11.8	57.0%
<b>Total Revenues</b>	<b>\$ 854.4</b>	<b>\$ 821.8</b>	<b>\$ 32.6</b>	<b>\$ 1,694.8</b>	<b>\$ 1,662.1</b>	<b>\$ 32.7</b>	<b>51.4%</b>
Salary/Benefits	\$ 408.7	\$ 401.2	\$ 7.5	\$ 818.9	\$ 809.4	\$ 9.5	50.5%
Drugs/Medical Supplies	171.2	163.8	7.3	340.1	332.0	8.1	51.6%
Resident and Fellow house staff	38.4	38.2	0.2	76.7	76.4	0.2	50.3%
Other Expenses (2)	223.5	211.3	12.2	426.6	414.5	12.2	53.9%
Capital Projects/Lease and Debt Payments	15.2	15.9	(0.7)	31.3	31.3	0.0	48.6%
<b>Total Expense</b>	<b>\$ 857.0</b>	<b>\$ 830.5</b>	<b>\$ 26.5</b>	<b>\$ 1,693.7</b>	<b>\$ 1,663.7</b>	<b>\$ 30.0</b>	<b>51.5%</b>
Transfer of Unrestricted Fund Balance	-	-		-	1.6	(1.6)	
<b>Net Income/(Loss)</b>	<b>\$ (2.6)</b>	<b>\$ (8.7)</b>	<b>\$ 6.0</b>	<b>\$ 1.1</b>	<b>\$ 0.0</b>	<b>\$ 1.1</b>	

(1) Other Revenue includes auxiliary services, gifts/endowments, external contract revenue, investment income and internal income (offset by internal expense)

(2) Other expenses includes utilities, insurance, medical contractual support, outside and other purchased services, repairs/maintenance and internal expenses (offset by internal income)

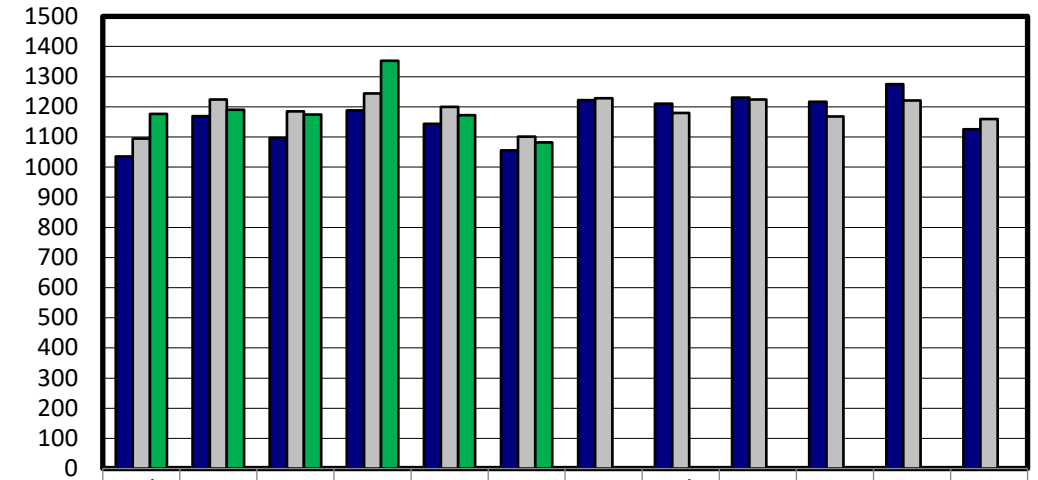
# UConn Health: FY25 Data points

## JDH Discharges



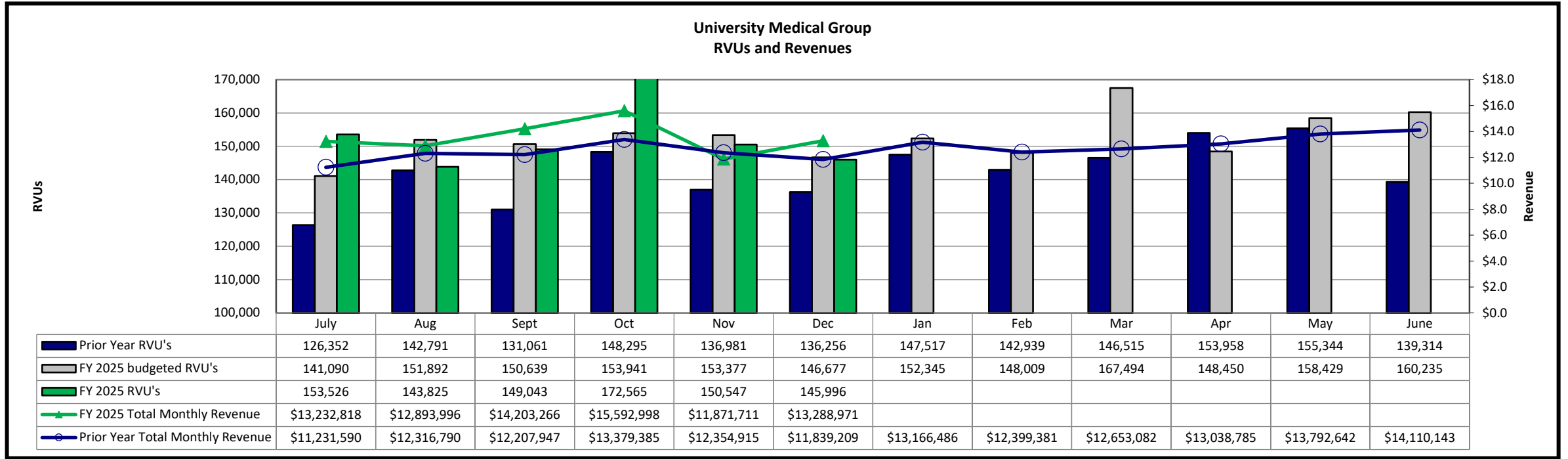
	Jul	Aug	Sep	Oct	Nov	Dec	Jan	Feb	Mar	Apr	May	Jun
Prior Year	902	944	962	996	915	1,071	1,031	980	1,053	1,042	1,147	958
Budget FY25	992	1,034	1,051	1,085	1,000	1,152	1,080	1,015	1,062	1,031	1,030	1,036
Actual FY25	1,070	1,059	1,013	1,123	1,045	1,045	-	-	-	-	-	-

## JDH Surgeries (Inpatient and UHSC)



	Jul	Aug	Sep	Oct	Nov	Dec	Jan	Feb	Mar	Apr	May	Jun
Prior Year	1035	1169	1097	1188	1144	1055	1222	1210	1231	1217	1275	1126
Budget FY24	1,095	1,224	1,185	1,244	1,200	1,101	1,229	1,180	1,224	1,168	1,221	1,159
Actual FY24	1177	1190	1174	1353	1172	1082	0	0	0	0	0	0

# UConn Health: FY25 Data points



### School of Medicine - Student Count

	FY2024 Actual	FY2025 Budget	FY2025 Forecast	Variance
Tuition In State	393	393	420	27
Tuition Out of State	37	33	33	-
Tuition Regional	7	9	5	(4)
	<b>437</b>	<b>435</b>	<b>458</b>	<b>23</b>

### School of Dental Medicine - Student Count

	FY2024 Actual	FY2025 Budget	FY2025 Forecast	Variance
Tuition In State	184	182	185	3
Tuition Out of State	10	12	8	(4)
Tuition Regional	10	10	12	2
	<b>204</b>	<b>204</b>	<b>205</b>	<b>1</b>

# FY25 State Budget Update

<b>UConn State Support (\$M)</b>	<b>Approved</b>	<b>Adjust 11/24</b>	<b>Adjust 12/24</b>	<b>Projected</b>
Permanent / Block Grant	\$227.4	(\$2.4)		\$225.0
Additional One-Time	98.8	(4.3)	1.2	95.7
<b>Total</b>	<b>\$326.2</b>	<b>(\$6.7)</b>	<b>\$1.2</b>	<b>\$320.7</b>

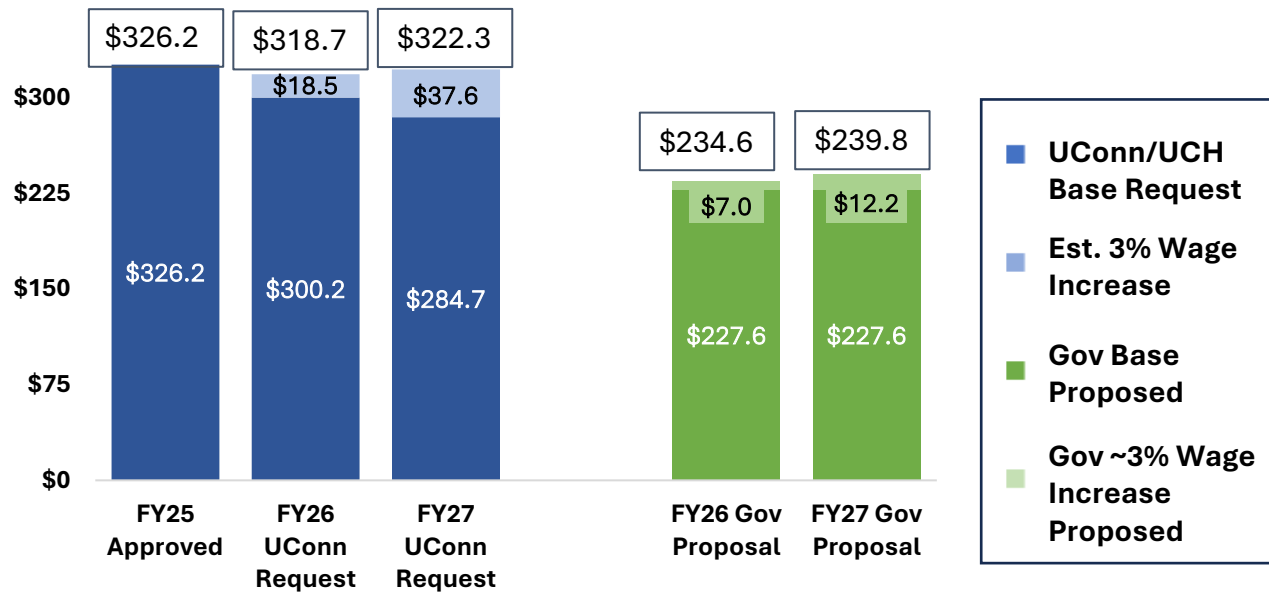
<b>UConn Health State Support (\$M)</b>	<b>Approved</b>	<b>Adjust 11/24</b>	<b>Adjust 12/24</b>	<b>Projected</b>
Permanent / Block Grant	\$118.0	(\$1.4)		\$116.6
Additional One-Time	80.2	(4.3)	1.2	77.1
<b>Total</b>	<b>\$198.2</b>	<b>(\$5.7)</b>	<b>\$1.2</b>	<b>\$193.7</b>

# Total State Operating Support

- UConn and UConn Health base funding requests are lower than the FY25 approved state support by \$46.3M in FY26 and \$75.6M in FY27
- The Governor’s proposed biennium budget (including the ~3% additional inflationary increase) is lower than requested creating a combined shortfall of \$163.8M in FY26 and \$170.1M in FY27

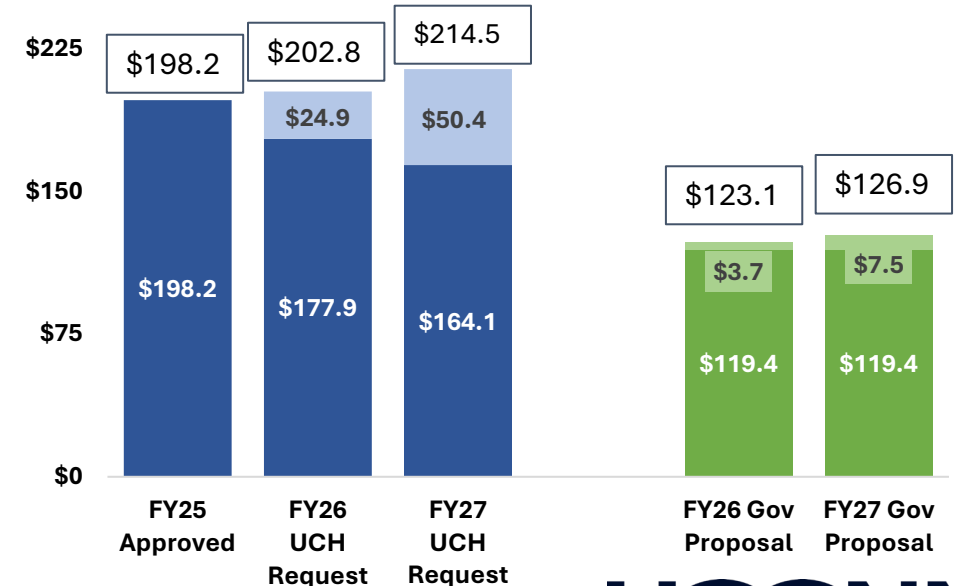
## UConn:

The shortfall from the Gov. proposed budget is \$84.1M in FY26 and \$82.5M in FY27



## UConn Health:

The shortfall from the Gov. proposed budget is \$79.7M in FY26 and \$87.6M in FY27

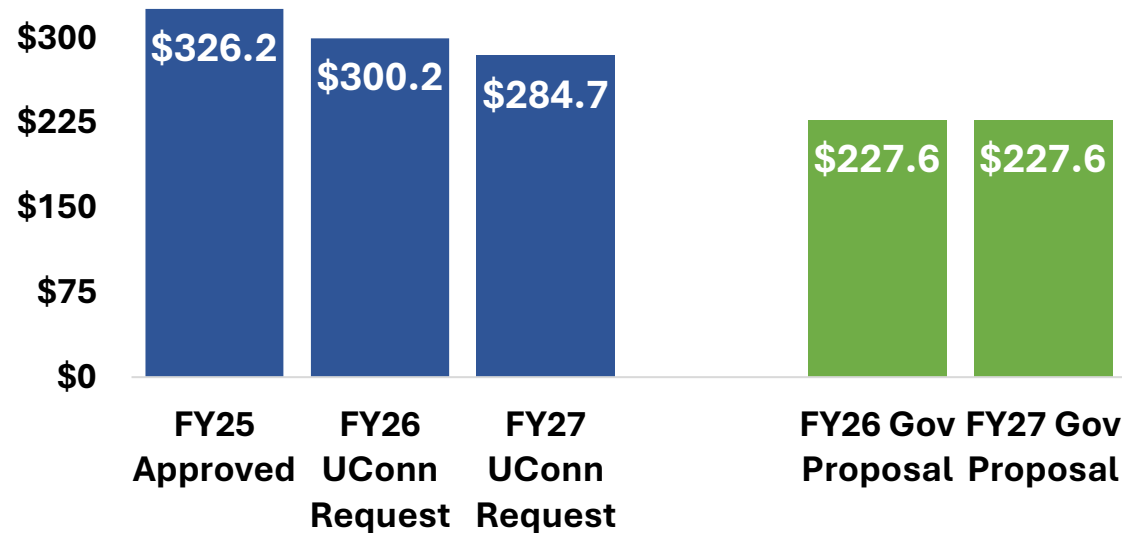


# Request for State Operating Support is Going Down

- UConn and UConn Health base funding requests are lower than the FY25 approved state support by \$46.3M in FY26 and \$75.6M in FY27
- The Governor’s proposed biennium budget (excluding the ~3% additional inflationary increase) is lower than requested creating a combined shortfall of \$131.1M in FY26 and \$101.8M in FY27

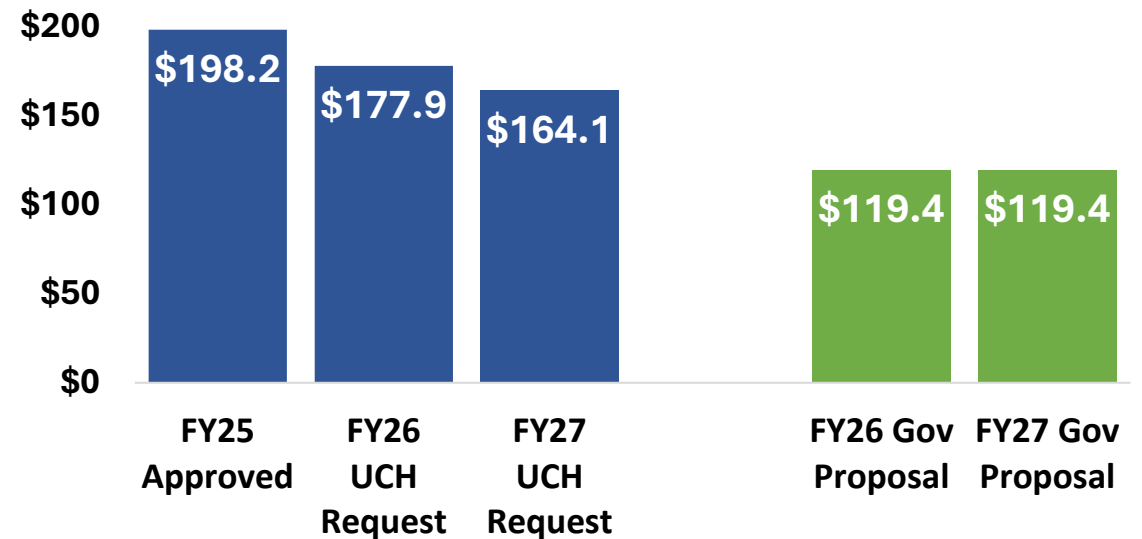
## UConn:

The shortfall from the Gov. proposed budget is \$72.6M in FY26 and \$57.1M in FY27



## UConn Health:

The shortfall from the Gov. proposed budget is \$58.5M in FY26 and \$44.7M in FY27

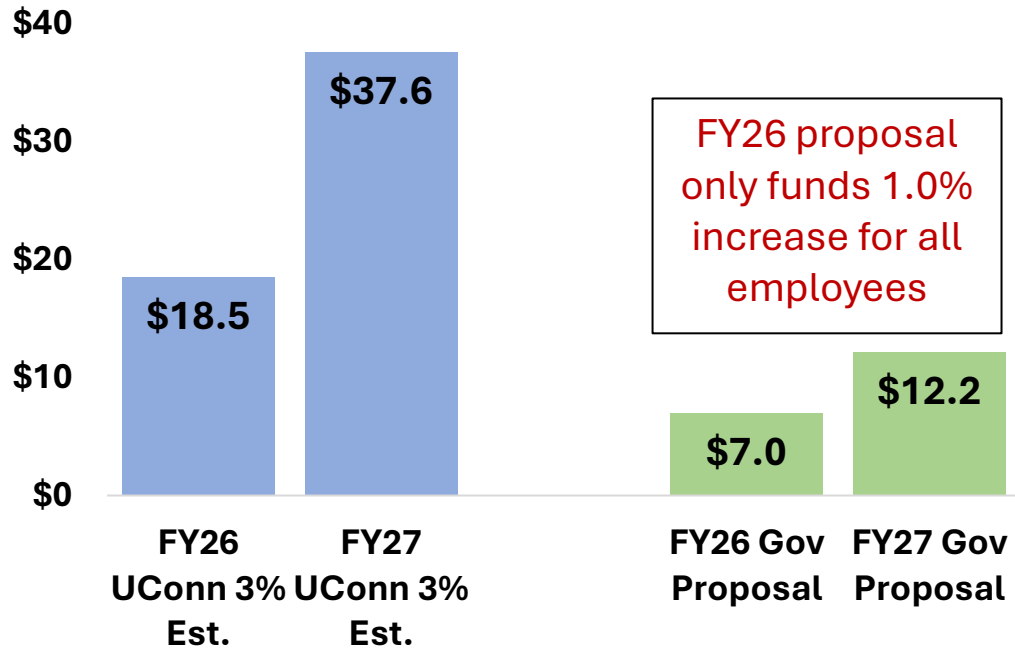


# Additional Inflationary Increase

For FY26, the Governor’s proposal includes an additional \$10.7M for inflationary increases to the block grant (for ~3% future wage increase) which is \$32.7M less than required for all employees. For FY27, the Governor’s proposal includes \$19.7M which is \$68.3M less than required for all employees.

### UConn:

The shortfall from the Gov. proposed ~3% is \$11.5M in FY26 and \$25.4M in FY27



### UConn Health:

The shortfall from the Gov. proposed ~3% is \$21.2M in FY26 and \$42.9M in FY27

