



# UConn and UConn Health Fiscal Year 2025 First Quarter Financial Review

# UConn: FY25 Q1 Actual vs Budget

	FY25 Q1 Actuals	FY25 Q1 Budget	Variance	% variance
State Appropriations	\$61.2	\$61.2	\$0.0	0.0%
Tuition	284.3	279.6	4.8	1.7%
Course/Mandatory Fees	69.0	64.2	4.8	7.4%
Grants & Contracts - Financial Aid	40.4	40.0	0.4	1.1%
Grants & Contracts - Other	54.1	51.4	2.7	5.2%
Auxiliary Revenue	98.5	97.0	1.5	1.6%
Other Revenues <sup>(1)</sup>	9.3	10.0	(0.7)	-6.7%
<b>Total Revenues</b>	<b>\$616.8</b>	<b>\$603.4</b>	<b>\$13.5</b>	<b>2.2%</b>
Salary/Benefits	\$149.5	\$145.0	\$4.5	3.1%
Financial Aid - Tuition Funded	99.9	99.2	0.6	0.6%
Financial Aid - Other	56.5	54.1	2.4	4.4%
Capital Projects/Lease and Debt Payments	4.1	5.0	(0.9)	-18.2%
Other Expenses <sup>(2)</sup>	78.5	78.2	0.3	0.4%
<b>Total Expense</b>	<b>\$388.5</b>	<b>\$381.5</b>	<b>\$6.9</b>	<b>1.8%</b>
Use of Fund Balance/FIP				
<b>Net Income/(Loss)</b>	<b>\$228.4</b>	<b>\$221.8</b>	<b>\$6.6</b>	<b>3.0%</b>

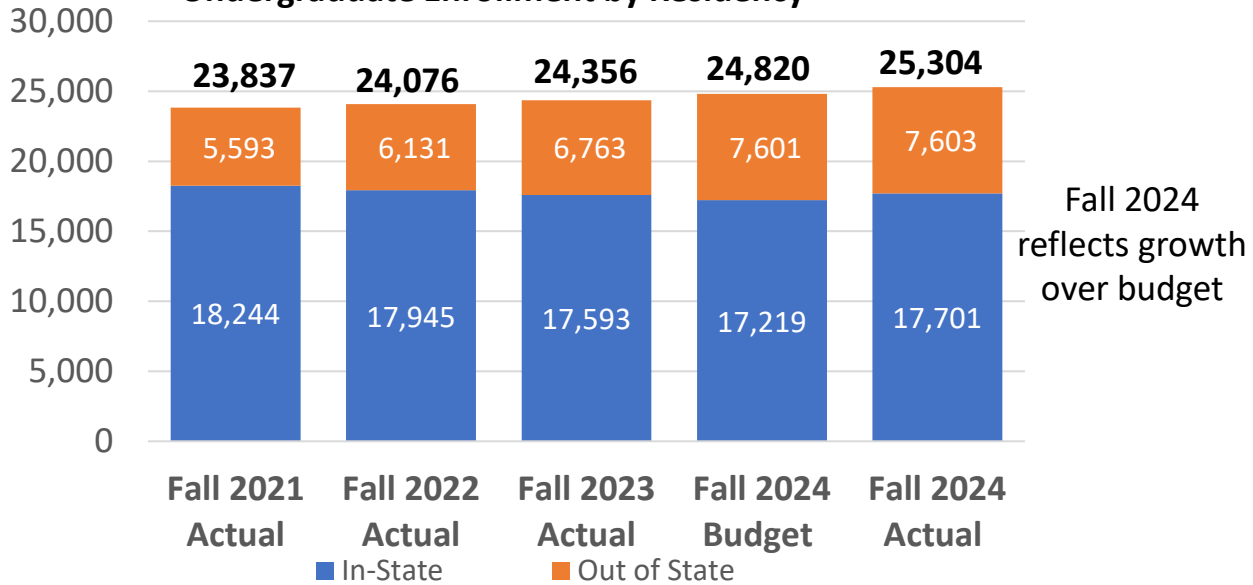
(1) Other Revenue includes Foundation, investments, gifts and self-supporting revenue

(2) Other Expense includes food service, supplies, facilities contracts, travel and other operating expenses

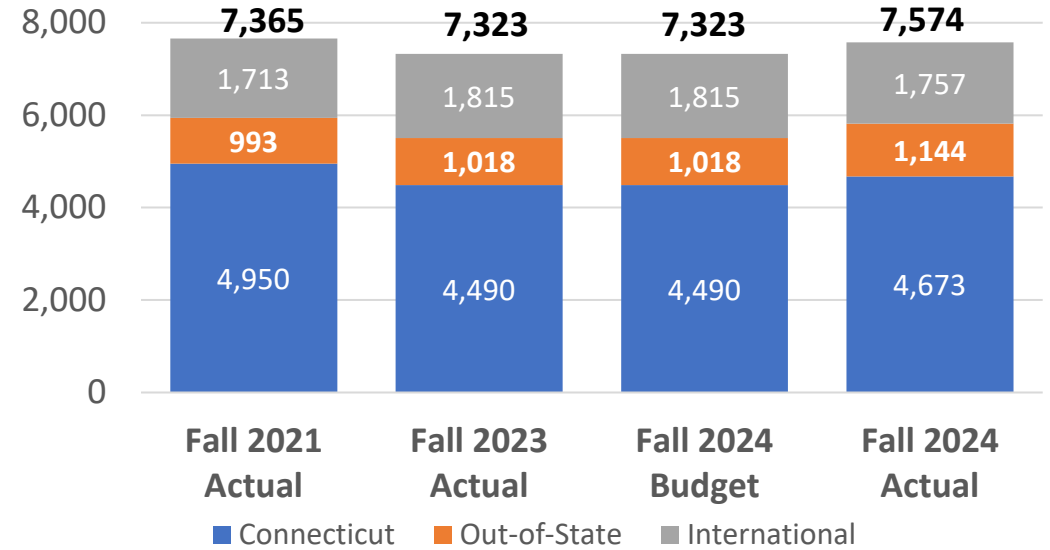


# UConn: FY25 Data points

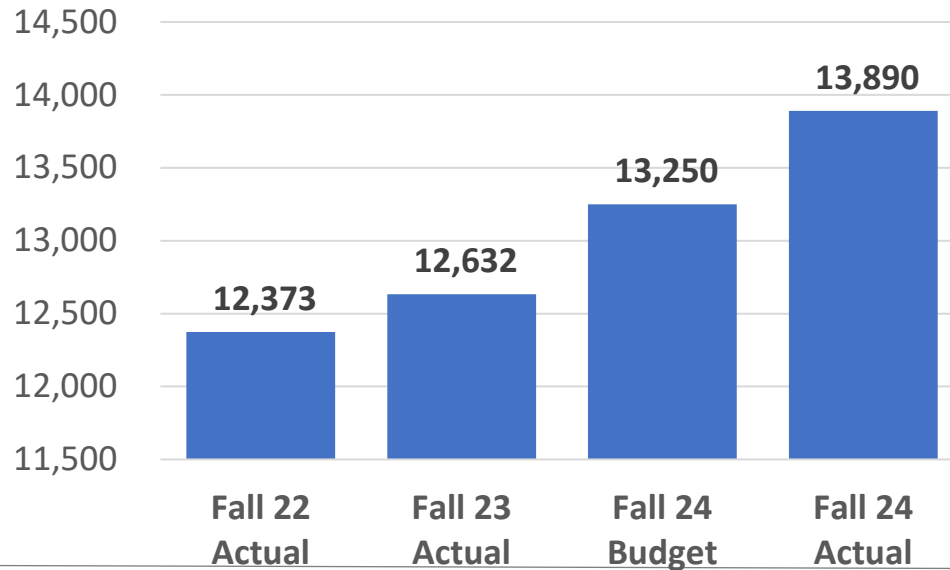
## Undergraduate Enrollment by Residency



## Graduate Enrollment by Residency



## Fall Housing Occupancy



Graduate enrollment is running favorably over budget, which is assumed to be flat enrollment. Growth includes professional programs, such as Social Work



# UConn Health: FY25 Q1 Actual vs Budget

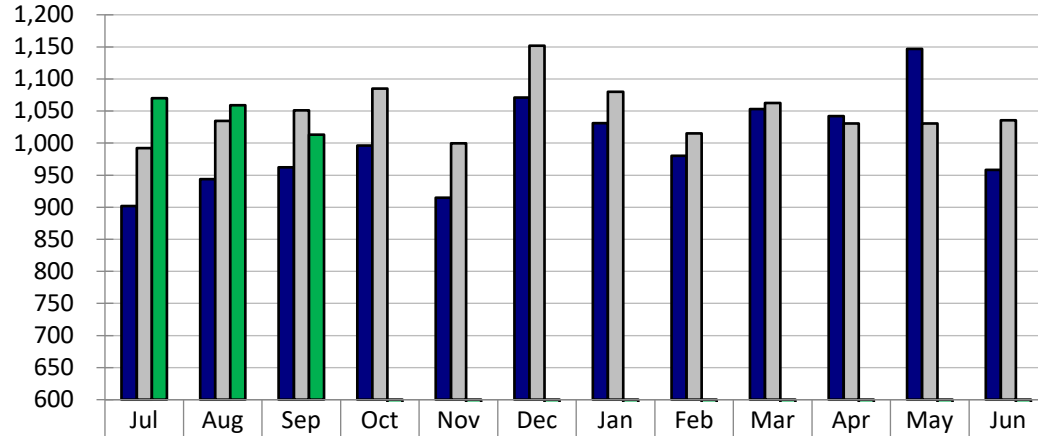
	FY25 Q1 Actuals	FY25 Q1 Budget	Variance	Percent Variance
State Appropriation	\$42.5	\$42.6	\$0.0	-0.1%
Tuition and Fees	8.6	8.6	0.0	0.0%
Grants & Contracts	27.1	28.9	-1.8	-6.2%
Interns/Residents	23.3	23.0	0.3	1.3%
Net Patient Revenue	258.2	247.9	10.3	4.2%
Other Revenue <sup>(1)</sup>	55.1	51.2	4.0	7.7%
<b>Total Revenues</b>	<b>\$414.9</b>	<b>\$402.2</b>	<b>\$12.7</b>	<b>3.2%</b>
Salary/Benefits	\$204.4	\$200.6	\$3.8	1.9%
Drugs/Medical Supplies	83.0	80.0	3.0	3.7%
Resident and Fellow house staff	19.3	19.1	0.3	1.4%
Other Expenses <sup>(2)</sup>	104.6	100.6	4.0	4.0%
Capital Projects/Lease and Debt Payments	7.4	7.7	-0.3	-4.1%
<b>Total Expense</b>	<b>\$418.8</b>	<b>\$408.0</b>	<b>\$10.8</b>	<b>2.6%</b>
<b>Net Income/(Loss)</b>	<b>-\$3.9</b>	<b>-\$5.8</b>	<b>\$1.9</b>	

(1) Other Revenue includes auxiliary services, gifts/endowments, external contract revenue, investment income and internal income (offset by internal expense)

(2) Other expenses includes utilities, insurance, medical contractual support, outside and other purchased services, repairs/maintenance and internal expenses (offset by internal income)

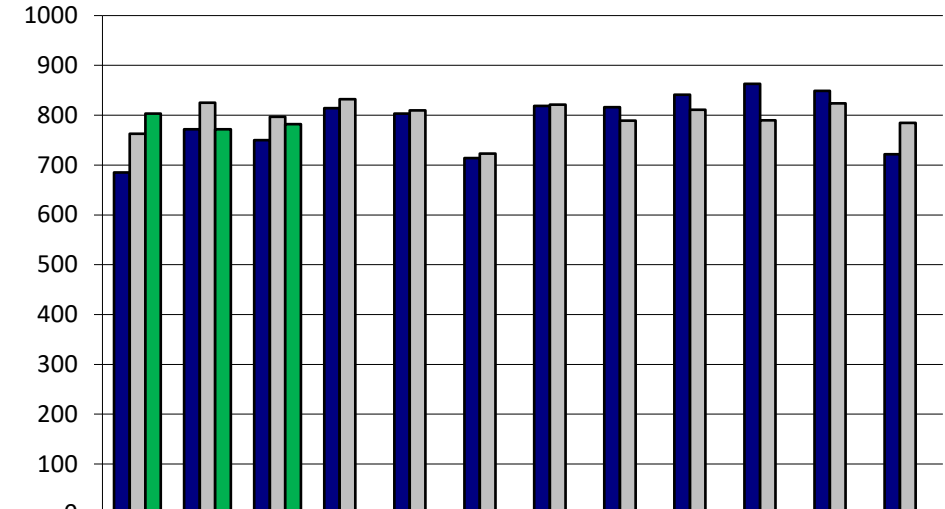
# UConn Health: FY25 Data points

## JDH Discharges



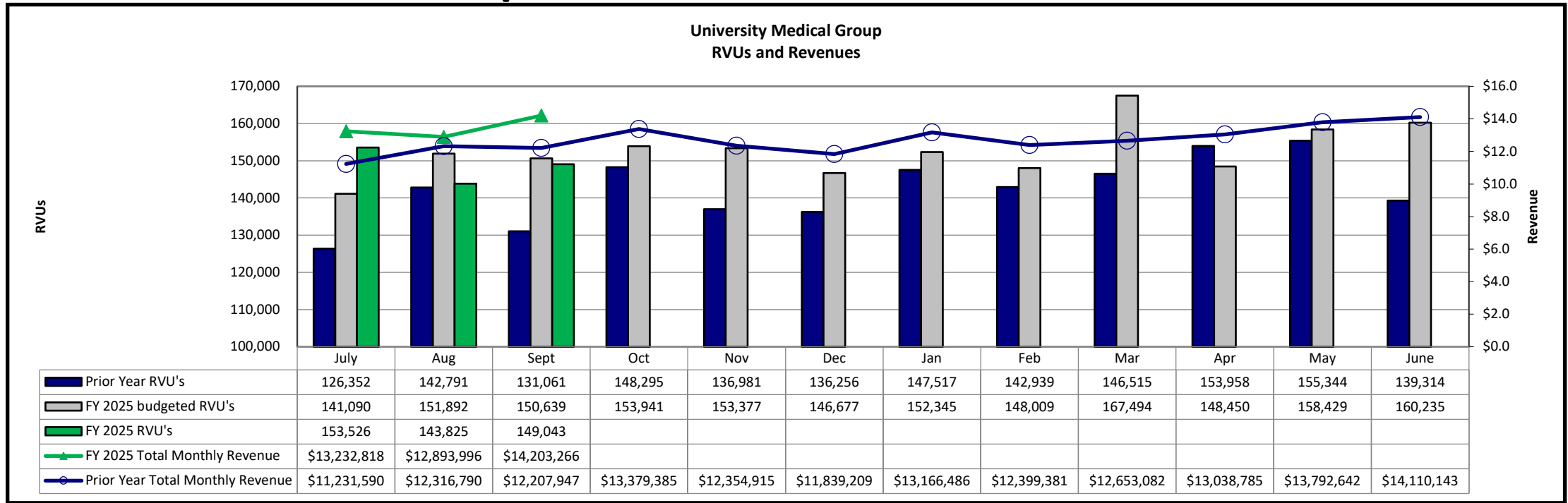
	Jul	Aug	Sep	Oct	Nov	Dec	Jan	Feb	Mar	Apr	May	Jun
■ Prior Year	902	944	962	996	915	1,071	1,031	980	1,053	1,042	1,147	958
■ Budget FY25	992	1,034	1,051	1,085	1,000	1,152	1,080	1,015	1,062	1,031	1,030	1,036
■ Actual FY25	1,070	1,059	1,013	-	-	-	-	-	-	-	-	-

## JDH Surgical (Inpatient and UHSC)



	Jul	Aug	Sep	Oct	Nov	Dec	Jan	Feb	Mar	Apr	May	Jun
■ Prior Year	685	772	750	814	803	714	819	816	841	863	849	722
■ Budget FY25	763	825	797	832	810	723	821	789	811	790	824	785
■ Actual FY25	803	772	782	0	0	0	0	0	0	0	0	0

# UConn Health: FY25 Data points



**School of Medicine - Student Count**

	FY2024 Actual	FY2025 Budget	FY2025 Forecast	Variance
Tuition In State	393	393	421	28
Tuition Out of State	37	33	34	1
Tuition Regional	7	9	5	(4)
	<b>437</b>	<b>435</b>	<b>460</b>	<b>25</b>

**School of Dental Medicine - Student Count**

	FY2024 Actual	FY2025 Budget	FY2025 Forecast	Variance
Tuition In State	184	182	185	3
Tuition Out of State	10	12	8	(4)
Tuition Regional	10	10	12	2
	<b>204</b>	<b>204</b>	<b>205</b>	<b>1</b>